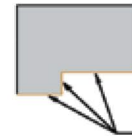
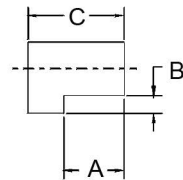
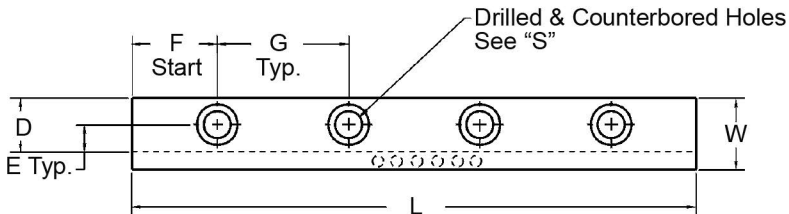


Lamina[®] L-Gibs – Inch

Bronze-Plated Steel
With and without
graphite plugs



Plated Surfaces

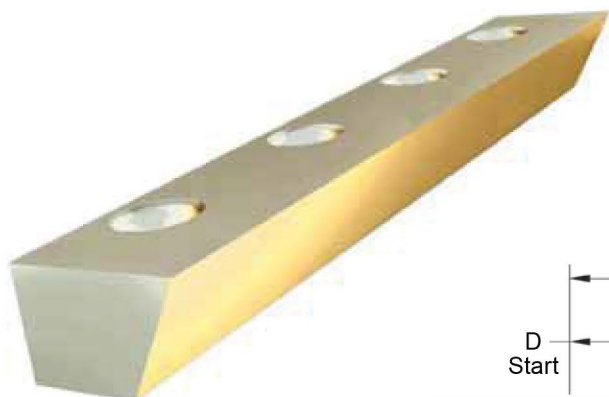
Standard L-Gibs with and without mounting holes
Self-Lubricating L-Gibs with and without mounting holes

Hole Location $\pm .005$
Unless noted, all dimensions $\pm .010$

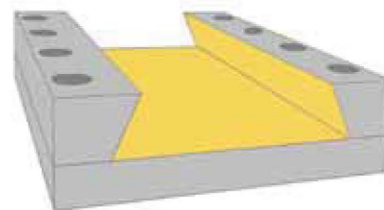
L-GIBS – INCH – BRONZE-PLATED – PLAIN & SELF-LUBRICATING												
PART NUMBER	PART NUMBER (Self-Lubricating)	L	W	A GH	B GW	C	D	E	F	G	S	
			+ .000 – .005	+ .001 – .000		+ .000 – .005		± .005			Qty	Size
L-4-6-3	N/A	5.25	.75	.312	.188	.485	.562	.281	.875	1.750	3	1/4"
L-4-6-4	N/A	7.00									4	
L-4-6-5	SLL-4-6-5	8.75									5	
L-4-6-5-NH	SLL-4-6-NH	8.75									NO MOUNTING HOLES	
L-5-8-3	N/A	6.00	1.00	.375	.250	.610	.750	.375	1.000	2.000	3	5/16"
L-5-8-4	N/A	8.00									4	
L-5-8-5	SLL-5-8-5	10.00									5	
L-5-8-5-NH	SLL-5-8-NH	10.00									NO MOUNTING HOLES	
L-7-10-3	N/A	7.50	1.25	.500	.375	.860	.875	.437	1.250	2.500	3	3/8"
L-7-10-4	N/A	10.00									4	
L-7-10-5	SLL-7-10-5	12.50									5	
L-7-10-5-NH	SLL-7-10-NH	12.50									NO MOUNTING HOLES	
L-10-12-3	N/A	9.00	1.50	.750	.500	1.235	1.000	.500	1.500	3.000	3	3/8"
L-10-12-4	N/A	12.00									4	
L-10-12-5	SLL-10-12-5	15.00									5	
L-10-12-5-NH	SLL-10-12-NH	15.00									NO MOUNTING HOLES	
L-12-16-4	N/A	16.00	2.00	.875	.625	1.470	1.375	.687	2.000	4.000	4	1/2"
L-12-16-6	SLL-12-16-6	24.00									6	
L-12-16-6-NH	SLL-12-16-NH	24.00									NO MOUNTING HOLES	
L-16-20-6	N/A	24.00	2.50	1.250	.750	1.970	1.750	.875	2.000	4.000	6	5/8"
L-16-20-8	SLL-16-20-8	32.00									8	
L-16-20-8-NH	SLL-16-20-NH	32.00									NO MOUNTING HOLES	
L-20-24-5	N/A	30.00	3.00	1.500	1.000	2.470	2.000	1.000	3.000	6.000	5	5/8"
L-20-24-8	SLL-20-24-8	48.00									8	
L-20-24-8-NH	SLL-20-24-NH	48.00									NO MOUNTING HOLES	

Lamina®

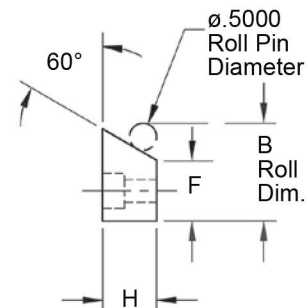
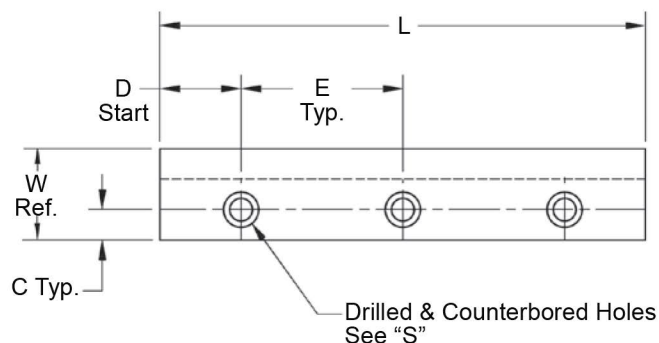
V-Gibs – 1/2 Inch 60°



Bronze-Plated Steel



Use Lamina V-Gibs and Wear Strips right from stock to create assemblies.



Only Lamina stocks standard V-Gibs

Hole location $\pm .005$
Unless noted, all dimensions $\pm .010$

V-GIBS – BRONZE PLATED

PART NUMBER	L	W Ref.	H	F Base Width	B Roll Dim.	C	D	E	S	
			$^{+.000}_{-.005}$	$^{+.000}_{-.001}$	$^{+.000}_{-.001}$	$^{+.000}_{-.005}$			No. Holes	Size
V-5-7-3	5.25	.92	.610	.562	1.2455	.281	.875	1.750	3	1/4"
V-5-7-4	7.00								4	
V-5-7-5	8.75								5	
V-6-10-3	6.00	1.18	.735	.750	1.4330	.375	1.000	2.000	3	5/16"
V-6-10-4	8.00								4	
V-6-10-5	10.00								5	
V-7-11-3	7.50	1.38	.860	.875	1.5580	.437	1.250	2.500	3	3/8"
V-7-11-4	10.00								4	
V-7-11-5	12.50								5	
V-8-12-3	9.00	1.70	.985	1.125	1.8080	.562	1.500	3.000	3	3/8"
V-8-12-4	12.00								4	
V-8-12-5	15.00								5	
V-10-16-4	16.00	1.97	1.235	1.250	1.9330	.625	2.000	4.000	4	1/2"
V-10-16-6	24.00								6	
V-12-20-6	24.00	2.49	1.470	1.625	2.3080	.812	2.000	4.000	6	5/8"
V-12-20-8	32.00								8	
V-14-24-5	30.00	3.01	1.720	2.000	2.6830	1.000	3.000	6.000	5	5/8"
V-14-24-8	48.00								8	
V-16-32-8	48.00	3.90	1.970	2.750	3.4330	1.375	3.000	6.000	8	3/4"

Lamina Bronze electroplated on steel has achieved universal acceptance for wear applications. The Lamina principle of using bronze for wear surfaces and steel for strength is seen on many products throughout the Lamina product line.

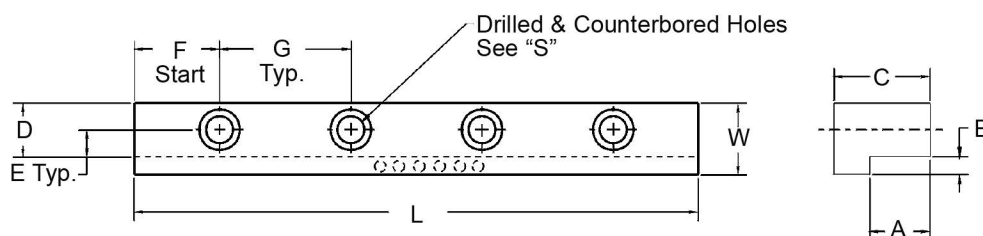
- Plating thickness: .008 – .010
- One-piece construction with pre-drilled and counter-bored screw holes, machined complete.

Lamina® L-Gib – Inch



Bronze with
Self-Lubricating
Graphite Plugs

- Plastics Injection Molds
- Special Machines
- Press Gibbing
- Special Slide Applications



For L-Gibs without mounting holes use "N" at the end of the part number.

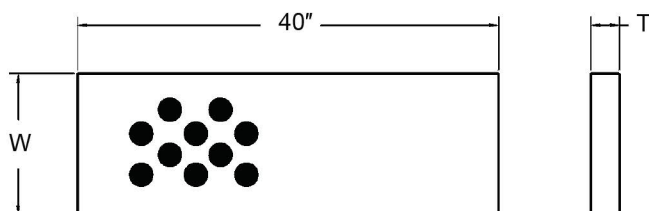
Unless noted, all dimensions $\pm .010$

L-GIBS – INCH – SOLID BRONZE – SELF-LUBRICATING											
PART NUMBER	L	W	A GH	B GW	C	D	E	F	G	M	
		$\begin{smallmatrix} +.000 \\ -.005 \end{smallmatrix}$	$\begin{smallmatrix} +.001 \\ -.000 \end{smallmatrix}$		$\begin{smallmatrix} +.000 \\ -.005 \end{smallmatrix}$		$\pm .005$			No. Holes	Size
L2LG42G	5.25	.75	.312	.188	.75	.56	.281	.875	1.750	3	1/4"
L2LG56G	7.00							.875		4	
L2LG70G	8.75							.875		5	
L3LG48G	6.00	1.00	.375	.250	.75	.75	.375	1.000	2.000	3	5/16"
L3LG64G	8.00							1.000		4	
L3LG80G	10.00							1.000		5	
L4LG48G	6.00	1.25	.500	.375	.88	.87	.437	1.000	2.500	3	3/8"
L4LG60G	7.50							1.250		3	
L4LG80G	10.00							1.250		4	
L4LG100G	12.50							1.250		5	
L6LG48G	6.00	1.50	.750	.500	1.25	1.00	.500	1.000	3.000	3	3/8"
L6LG72G	9.00							1.500		3	
L6LG96G	12.00							1.500		4	
L6LG120G	15.00							1.500		5	
L7LG64G	8.00	2.00	.875	.625	1.50	1.37	.687	1.000	2.000	4	1/2"
L7LG96G	12.00							1.500		4	
L7LG128G	16.00							2.000		4	
L10LG96G	12.00	2.50	1.250	.750	2.00	1.75	.875	1.500	3.000	4	5/8"
L10LG144G	18.00							2.250		4	
L10LG192G	24.00							3.000		4	
L12LG96G	12.00	3.00	1.500	1.000	2.50	2.00	1.000	1.500	3.000	4	5/8"
L12LG144G	18.00							2.250		4	
L12LG192G	24.00							3.000		4	

Wear Strip Ways – Solid Bronze – Graphite Plugs



Bronze with
Self-Lubricating
Graphite Plugs



Call Lamina Customer Service for hole pattern.

WEAR STRIP WAYS			
PART NUMBER	T ±.001	W	PLUG DIA.
L312320NG	0.375	1.50	5/16
L316320NG		2.00	3/8
L320320NG		2.50	3/8
L324320NG		3.00	1/2
L412320NG	0.500	1.50	5/16
L416320NG		2.00	3/8
L420320NG		2.50	3/8
L424320NG		3.00	1/2
L432320NG	0.625	4.00	1/2
L516320NG		2.00	3/8
L524320NG		3.00	1/2
L532320NG		4.00	1/2
L616320NG	0.750	2.00	3/8
L624320NG		3.00	1/2
L632320NG		4.00	1/2
L640320NG		5.00	1/2

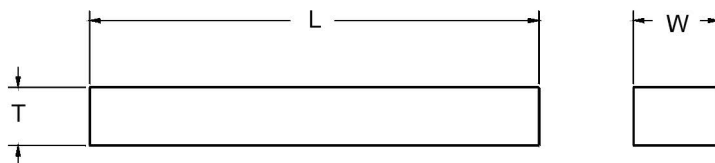


Wear Strips – Bronze Plated

Lamina bronze-plated wear strips are offered cut to your exact length or in 48" lengths.

WEAR STRIPS – INCH – BRONZE-PLATED											
BRONZE PLATED		T Thick- ness +.000 –.002	W Width +.000 –.080	BRONZE PLATED		T Thick- ness +.000 –.002	W Width +.000 –.080	BRONZE PLATED		T Thick- ness +.000 –.002	W Width +.000 –.080
PART NUMBER by the inch	PART NUMBER 48” length			PART NUMBER by the inch	PART NUMBER 48” length			PART NUMBER by the inch	PART NUMBER 48” length		
FP-1/8-x-1	PPF013100	1/8”	1	FP-5/16-x-1	PPF031100	5/16”	1	FP-5/8-x-1	PPF063100	5/8”	1
FP-1/8-x-1-1/4	PPF013125		1-1/4	FP-5/16-x-1-1/4	PPF031125		1-1/4	FP-5/8-x-1-1/4	PPF063125		1-1/4
FP-1/8-x-1-1/2	PPF013150		1-1/2	FP-5/16-x-1-1/2	PPF031150		1-1/2	FP-5/8-x-1-1/2	PPF063150		1-1/2
FP-1/8-x-1-3/4	PPF013175		1-3/4	FP-5/16-x-1-3/4	PPF031175		1-3/4	FP-5/8-x-1-3/4	PPF063175		1-3/4
FP-1/8-x-2	PPF013200		2	FP-5/16-x-2	PPF031200		2	FP-5/8-x-2	PPF063200		2
FP-1/8-x-2-1/2	PPF013250		2-1/2	FP-5/16-x-2-1/2	PPF031250		2-1/2	FP-5/8-x-2-1/2	PPF063250		2-1/2
FP-1/8-x-3	PPF013300		3	FP-5/16-x-3	PPF031300		3	FP-5/8-x-3	PPF063300		3
FP-1/8-x-3-1/2	PPF013350		3-1/2	FP-5/16-x-3-1/2	PPF031350		3-1/2	FP-5/8-x-3-1/2	PPF063350		3-1/2
FP-1/8-x-4	PPF013400		4	FP-5/16-x-4	PPF031400		4	FP-5/8-x-4	PPF063400		4
FP-1/8-x-4-1/2	PPF013450		4-1/2	FP-5/16-x-4-1/2	PPF031450		4-1/2	FP-5/8-x-4-1/2	PPF063450		4-1/2
FP-1/8-x-5	PPF013500		5	FP-5/16-x-5	PPF031500		5	FP-5/8-x-5	PPF063500		5
FP-1/8-x-6	PPF013600		6	FP-5/16-x-6	PPF031600		6	FP-5/8-x-6	PPF063600		6
FP-3/16-x-1	PPF019100	3/16”	1	FP-5/16-x-8	PPF031800	3/8”	8	FP-5/8-x-8	PPF063800	3/4”	8
FP-3/16-x-1-1/4	PPF019125		1-1/4	FP-5/16-x-10	PPF0311000		10	FP-5/8-x-10	PPF0631000		10
FP-3/16-x-1-1/2	PPF019150		1-1/2	FP-5/16-x-12	PPF0311200		12	FP-5/8-x-12	PPF0631200		12
FP-3/16-x-1-3/4	PPF019175		1-3/4	FP-3/8-x-1	PPF038100		1	FP-3/4-x-1	PPF075100		1
FP-3/16-x-2	PPF019200		2	FP-3/8-x-1-1/4	PPF038125		1-1/4	FP-3/4-x-1-1/4	PPF075125		1-1/4
FP-3/16-x-2-1/2	PPF019250		2-1/2	FP-3/8-x-1-1/2	PPF038150		1-1/2	FP-3/4-x-1-1/2	PPF075150		1-1/2
FP-3/16-x-3	PPF019300		3	FP-3/8-x-1-3/4	PPF038175		1-3/4	FP-3/4-x-1-3/4	PPF075175		1-3/4
FP-3/16-x-3-1/2	PPF019350		3-1/2	FP-3/8-x-2	PPF038200		2	FP-3/4-x-2	PPF075200		2
FP-3/16-x-4	PPF019400		4	FP-3/8-x-2-1/2	PPF038250		2-1/2	FP-3/4-x-2-1/2	PPF075250		2-1/2
FP-3/16-x-4-1/2	PPF019450		4-1/2	FP-3/8-x-3	PPF038300		3	FP-3/4-x-3	PPF075300		3
FP-3/16-x-5	PPF019500		5	FP-3/8-x-3-1/2	PPF038350		3-1/2	FP-3/4-x-3-1/2	PPF075350		3-1/2
FP-3/16-x-6	PPF019600		6	FP-3/8-x-4	PPF038400		4	FP-3/4-x-4	PPF075400		4
FP-3/16-x-8	PPF019800	8	FP-3/8-x-4-1/2	PPF038450	4-1/2	FP-3/4-x-4-1/2	PPF075450	4-1/2			
FP-1/4-x-1	PPF025100	1/4”	1	FP-3/8-x-5	PPF038500	1/2”	5	FP-3/4-x-5	PPF075500	1”	5
FP-1/4-x-1-1/4	PPF025125		1-1/4	FP-3/8-x-6	PPF038600		6	FP-3/4-x-6	PPF075600		6
FP-1/4-x-1-1/2	PPF025150		1-1/2	FP-3/8-x-8	PPF038800		8	FP-3/4-x-8	PPF075800		8
FP-1/4-x-1-3/4	PPF025175		1-3/4	FP-3/8-x-10	PPF0381000		10	FP-3/4-x-10	PPF0751000		10
FP-1/4-x-2	PPF025200		2	FP-3/8-x-12	PPF0381200		12	FP-3/4-x-12	PPF0751200		12
FP-1/4-x-2-1/2	PPF025250		2-1/2	FP-1/2-x-1	PPF050100		1	FP-1-x-1	PPF100100		1
FP-1/4-x-3	PPF025300		3	FP-1/2-x-1-1/4	PPF050125		1-1/4	FP-1-x-1-1/4	PPF100125		1-1/4
FP-1/4-x-3-1/2	PPF025350		3-1/2	FP-1/2-x-1-1/2	PPF050150		1-1/2	FP-1-x-1-1/2	PPF100150		1-1/2
FP-1/4-x-4	PPF025400		4	FP-1/2-x-1-3/4	PPF050175		1-3/4	FP-1-x-1-3/4	PPF100175		1-3/4
FP-1/4-x-4-1/2	PPF025450		4-1/2	FP-1/2-x-2	PPF050200		2	FP-1-x-2	PPF100200		2
FP-1/4-x-5	PPF025500		5	FP-1/2-x-2-1/2	PPF050250		2-1/2	FP-1-x-2-1/2	PPF100250		2-1/2
FP-1/4-x-6	PPF025600		6	FP-1/2-x-3	PPF050300		3	FP-1-x-3	PPF100300		3
FP-1/4-x-8	PPF025800	8	FP-1/2-x-3-1/2	PPF050350	3-1/2	FP-1-x-3-1/2	PPF100350	3-1/2			
FP-1/4-x-10	PPF0251000	10	FP-1/2-x-4	PPF050400	4	FP-1-x-4	PPF100400	4			
FP-1/4-x-12	PPF0251200	12	FP-1/2-x-4-1/2	PPF050450	4-1/2	FP-1-x-4-1/2	PPF100450	4-1/2			
Create custom assemblies using standard Lamina component parts.				FP-1/2-x-5	PPF050500	5	FP-1-x-5	PPF100500	5		
				FP-1/2-x-6	PPF050600	6	FP-1-x-6	PPF100600	6		
				FP-1/2-x-8	PPF050800	8	FP-1-x-8	PPF100800	8		
				FP-1/2-x-10	PPF0501000	10	FP-1-x-10	PPF1001000	10		
				FP-1/2-x-12	PPF0501200	12	FP-1-x-12	PPF1001200	12		

Side Strip – Bronze-Plated – SP Inch & Metric



NOTE:

- ♦ Maximum length is 48" (1219mm).

SIDE STRIP – METRIC			
BRONZE-PLATED		T Thickness -0.45 -0.50	W Width +0.0 -0.12
PART NUMBER by 25mm	PART NUMBER 1219mm length		
SP-15MM-X-25MM	MSP15025	15	25
SP-25MM-X-37MM	MSP25037	25	37

SIDE STRIP –INCH			
BRONZE-PLATED		T THICK- NESS -.018 -.020	W WIDTH -.000 -.005
PART NUMBER by the Inch	PART NUMBER 48" length		
SP-1/2-X-1	SPF050100	1/2	1
SP-1/2-X-1-1/2	SPF050150		1-1/2
SP-5/8-X-1	SPF063100	5/8	1
SP-5/8-X-2	SPF063200		2
SP-3/4-X-1	SPF075100	3/4	1
SP-3/4-X-1-1/2	SPF075150		1-1/2
SP-3/4-X-2	SPF075200		2
SP-1-X-1-1/2	SPF100150	1	1-1/2
SP-1-X-2	SPF100200		2
SP-1-X-3	SPF100300		3
SP-1-1/4-X-2	SPF125200	1-1/4	2
SP-1-1/4-X-3	SPF125300		3
SP-1-1/2-X-2	SPF150200	1-1/2	2
SP-1-1/2-X-2-1/2	SPF150250		2-1/2
SP-2-X-2	SPF200200	2	2



Wear Strips – Inch – Fixed-Length

No suffix for solid bronze

G or NG is necessary for ordering self-lubricating – See Page 19.

WEAR STRIPS – IMPERIAL															
PART NUMBERS (Thickness)				W Width	L Length	SCREW HOLES		HOLE LOCATION							
1/4"	3/8"	1/2"	5/8"			AMT	PAT	A	B	C	D	E	F	G	H
L28-32	L38-32	-	-	1.00	4.00	2	A	1.00	3.00	-	-	-	-	.50	-
L28-40	L38-40	-	-		5.00	3		.50	2.50	4.50	-	-	-		
L28-48	L38-48	-	-		6.00	3		1.00	3.00	5.00	-	-	-		
L28-64	L38-64	-	-		8.00	4		1.00	3.00	5.00	7.00	-	-		
L28-80	L38-80	-	-		10.00	5		1.00	3.00	5.00	7.00	9.00	-		
L28-96	L38-96	-	-		12.00	6		1.00	3.00	5.00	7.00	9.00	11.00		
-	-	L412-24	L512-24	1.50	3.00	2	A	.50	2.50	-	-	-	-	.75	-
L212-32	L312-32	L412-32	L512-32		4.00	2		1.00	3.00	-	-	-	-		
L212-40	L312-40	L412-40	L512-40		5.00	3		.50	2.50	4.50	-	-	-		
L212-48	L312-48	L412-48	L512-48		6.00	3		1.00	3.00	5.00	-	-	-		
L212-64	L312-64	L412-64	L512-64		8.00	4		1.00	3.00	5.00	7.00	-	-		
L212-80	L312-80	L412-80	L512-80		10.00	5		1.00	3.00	5.00	7.00	9.00	-		
L212-96	L312-96	L412-96	L512-96		12.00	6		1.00	3.00	5.00	7.00	9.00	11.00		
-	-	L416-24	L516-24	2.00	3.00	2	A	.50	2.50	-	-	-	-	1.00	-
L216-32	L316-32	L416-32	L516-32		4.00	2		1.00	3.00	-	-	-	-		
L216-40	L316-40	L416-40	L516-40		5.00	3		.50	2.50	4.50	-	-	-		
L216-48	L316-48	L416-48	L516-48		6.00	3		1.00	3.00	5.00	-	-	-		
L216-64	L316-64	L416-64	L516-64		8.00	4		1.00	3.00	5.00	7.00	-	-		
L216-80	L316-80	L416-80	L516-80		10.00	5		1.00	3.00	5.00	7.00	9.00	-		
L216-96	L316-96	L416-96	L516-96		12.00	6		1.00	3.00	5.00	7.00	9.00	11.00		
-	-	L420-24	L520-24	2.50	3.00	2	A	.50	2.50	-	-	-	-	1.25	-
L220-32	L320-32	L420-32	L520-32		4.00	2		1.00	3.00	-	-	-	-		
L220-40	L320-40	L420-40	L520-40		5.00	3		.50	2.50	4.50	-	-	-		
L220-48	L320-48	L420-48	L520-48		6.00	3		1.00	3.00	5.00	-	-	-		
L220-64	L320-64	L420-64	L520-64		8.00	4		1.00	3.00	5.00	7.00	-	-		
L220-80	L320-80	L420-80	L520-80		10.00	5		1.00	3.00	5.00	7.00	9.00	-		
L220-96	L320-96	L420-96	L520-96		12.00	6		1.00	3.00	5.00	7.00	9.00	11.00		
-	-	L424-24	L524-24	3.00	3.00	4	B	.50	2.50	-	-	-	-	0.50	2.50
L224-32	L324-32	L424-32	L524-32		4.00	4		1.00	3.00	-	-	-	-		
L224-40	L324-40	L424-40	L524-40		5.00	4		.50	4.50	-	-	-	-		
L224-48	L324-48	L424-48	L524-48		6.00	4	C	1.00	5.00	-	-	-	-		
L224-64	L324-64	L424-64	L524-64		8.00	6		1.00	3.00	5.00	-	-	7.00		
L224-80	L324-80	L424-80	L524-80		10.00	6		1.00	5.00	9.00	-	-	-		
L224-96	L324-96	L424-96	L524-96		12.00	8	C	1.00	3.00	5.00	7.00	9.00	11.00		
L232-32	L332-32	L432-32	L532-32	4.00	4.00	4	B	1.00	3.00	-	-	-	-	1.00	3.00
L232-40	L332-40	L432-40	L532-40		5.00	4		.50	4.50	-	-	-	-		
L232-48	L332-48	L432-48	L532-48		6.00	4		1.00	5.00	-	-	-	-		
L232-64	L332-64	L432-64	L532-64		8.00	6	C	1.00	3.00	5.00	-	-	7.00		
L232-80	L332-80	L432-80	L532-80		10.00	6	B	1.00	5.00	9.00	-	-	-		
L232-96	L332-96	L432-96	L532-96		12.00	8	C	1.00	3.00	5.00	7.00	9.00	11.00		