

# SECTION G

## MISCELLANEOUS PRODUCTS

### Page Index

ITEM DESCRIPTION		SERIES CODE	PAGE NUMBER
OIL ABSORBENT: T.C.GREEN	BIOREMEDIATION	GREEN PRODUCT	BAGS / PADS / SOCKS / BOOMS
GENERAL SPILL ABSORBENT: AQUA SORB	NON-HAZARDOUS	SOLIDIFIES LIQUID MATERIALS	PAGE INSERT
HAND CARE: MAN-O / GLOVE COAT / KEEP KLEEN	GREEN PRODUCT	HAND PROTECTION / CLEANER	PAGE INSERT
INSULATOR PLATES		CUSTOM / STANDARD SHEETS	PAGE INSERT
PEWAG CHAINS / HOOKS	LIFTING PRODUCTS	HIGH QUALITY GRADE 120 &100	PAGE INSERT
*POLISHING - MOLD / DIE: ENGIS CORP.	(CALL FOR CATALOG)	POLISHING EQUIP. / SUPPLIES	PAGE INSERT
*POLISHING - MOLD / DIE: GESSWEIN CO.	(CALL FOR CATALOG)	POLISHING EQUIP. / SUPPLIES	PAGE INSERT
POLISHING - MOLD / DIE: XEBEC CERAMIC STONES		FLAT / ROUND STONES	PAGE INSERT
POLISHING - MOLD / DIE: XEBEC CERAMIC BRUSHES		WHITE(1000 Grit) / RED(1200 Grit	PAGE INSERT
POLISHING - MOLD / DIE: DIAMOND COMPOUND		OIL / WATER BASE SYRINGES	PAGE INSERT
*GENERAL PRODUCT LISTING OF POLISHING CATALOGS*			
CERAMIC STONES			
DIAMOND COMPOUNDS			
FELT BOBS			
WOOD BOBS / STICKS			
MOUNTED POINTS			
FILES / RIFFLERS			
POLISHING STONES			
STONE HOLDERS			
LUBRICANTS - OIL or WATER BASE			
ULTRASONIC POLISHING EQUIPMENT / HAND TOOLS			
WELDERS - LOW HEAT FOR MOLD REPAIR			
MOLD AEROSOLS / TOOL TOWELS		RELEASE / SAVER / DEGREASER	PAGE INSERT
STANDARD ABRASIVES		COATED / NON-WOVEN ABRASIVES	PAGE INSERT



# T.C. GREEN

## Absorbent

FOR

### OIL - PETROLEUM - LUBRICANTS



T.C.Green is a lab-tested and field-proven industrial absorbent. Economical and efficient it will absorb on contact, alcohols, esthers, solvents, hydrocarbons, paints, heavy metals with no risk of chemical interactions. T.C.Green will out perform any other absorbent on water as it can float for weeks absorbing hydrocarbons and remaining hydrophobic.

**COST EFFECTIVE:** All too often an absorbent is chosen based solely on the cost per bag and not the total clean-up cost, which is the equation of absorption ratio, time, labor cost and cost of disposal. T.C.Green is inexpensive, easy to apply, safe to use, easy to dispose of, huge volume difference!

- \* NO SILICA,
- \* REDUCES EXPLOSIVE VAPORS UP TO 90%
- \* NON-ABRASIVE, HIGH BTU VALUE
- \* UNLIMITED SHELF LIFE

Approximately  
1 LB. OF PRODUCT  
WILL PICK UP  
1 GALLON  
OF OIL

#### CLAY VS. T.C.GREEN

( 10 to 1 Ratio ) Every 2000 lb. skid of clay replaced  
VOLUME with approx. 192 lbs. of T.C.Green



- 1,800 lbs of difference per one skid, x 12 mths. 21,600 per year!
- COST EFFECTIVE \*\*SAVINGS\*\*
- MUCH LESS HANDLING ( approx. replace 1 16 lb. bag for every 4 bags 160 lbs.+)
- HUGE OVERALL REDUCTION OF WASTE
- BIOREMEDIATION UTILIZING ORGANICS
- WILL NOT LEACH
- NON ABRASIVE - won't damage parts  
( Hardness Factor  
Steel 6.0 / Clay 7.0 / T.C.Green < 1 )



#### PART# G16

**\* Absorbs up to 16 gallons of oil**  
2 Cubic foot bag / 16 lbs. each

#### PART#

			<u>GALLONS ABSORBED</u>
GP18	Pillows 18" x 18" x 3"	30 / case	2+
GS25	Socks 2" x 5'	40 / case	1.5
GS21	Socks 2" x 10'	20 / case	3
GS44	Socks 4" x 4'	20 / case	3
GS48	Socks 4" x 8'	10 / case	6

**( STOCK - Union City, Pa Warehouse)**

**Toll Free(877)438-7657 Fax(814)438-8146**

**sales@toolcompinc.com / www.toolingcomponentsinc.com**



**TOOLING COMPONENTS INC.**



# T.C. GREEN

## Absorbent

FOR  
OIL - PETROLEUM - LUBRICANTS

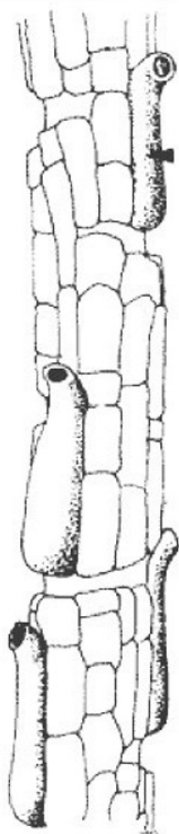
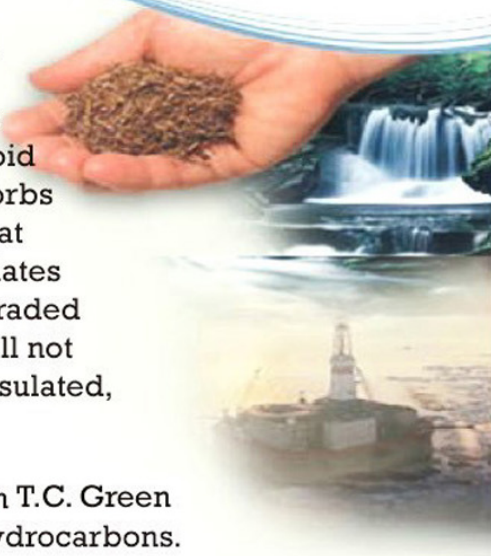


### HOW DOES IT WORK ?

Peat moss is made up of small capillaries whose cells are full of water. When the peat is processed and water is removed from these cells, the peat becomes activated. Once "activated", the peat has a high capacity to absorb hydrocarbons into the void cells which once contained water. T.C.Green absorbs oil, or other hydrocarbons with a wicking action that draws the hydrocarbon into the cells and encapsulates the oil on contact. The oil will be naturally biodegraded and transformed into harmless by-products that will not damage the environment since the oil, once encapsulated, will not normally leach out.

The presence of humic acid and microorganisms in T.C. Green and in the air enhance the natural breakdown of hydrocarbons. All hydrocarbons are organic carbon compounds made up of carbon, hydrogen and oxygen.

Microbial activity will break nearly all hydrocarbons down into carbon dioxide and water within a short period of time.



Tubular structure of sphagnum peat moss

### ( Liquids Absorbed by T.C.Green: )

Alcohols & Ethers	Hydrocarbons	Aromatics	Carbonyl Compounds
Butanol	Cyclohexane	Benzene	Acetone
Ethanol	Diesel Fuel	Toluene	
Ethyl Ether	Gasoline	Xylene	
Ethylene Glycol	Heptane	Phenol	<b>Chlorinated Solvents</b>
Isobutanol	Hexane		Carbon Tetrachloride
Isopropanol	Hexane (97%)		Chloroform
Methanol	Motor Oils		Dichloromethane
Propanol	Paraffin Oil		
	Pentane		
	Varsol		
	Kerosene		
	Jet Fuel		
	Petroleum Ether		
	Bunker C		

#### Miscellaneous

\* Meets the criteria for  
-Sanitary Landfill Disposal according to EPA regulations (USA)  
-Biodegradability Test (ASTM G22-76/ASTM G21-70)  
-Paint Filter Liquid Test (Method 9095)  
-Toxicity Characteristic Leaching Procedure TCLP (40 CFR 26)

Toll Free (877) 438-7657 Fax (814) 438-8146

sales@toolcompinc.com / www.toolingcomponentsinc.com



TOOLING COMPONENTS INC.





**AQUA Sorb®** is a solid, granular cross-linked sodium polyacrylate *Advanced Superabsorbent Polymer* that rapidly absorbs & retains large volumes of aqueous solutions, converting them into a semi-solid, gelled state.

**Superior absorbing polymer**

The absorptive properties of **AQUA Sorb®** are ideally suited for the absorption & solidification of industrial waste streams containing inks, heavy metals and other general contaminants.

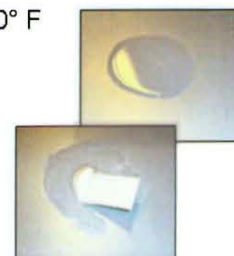
**AQUA Sorb®** is a remarkable, yet economical tool for spill management, containment, clean up and disposal.

#### **AQUA Sorb® :**

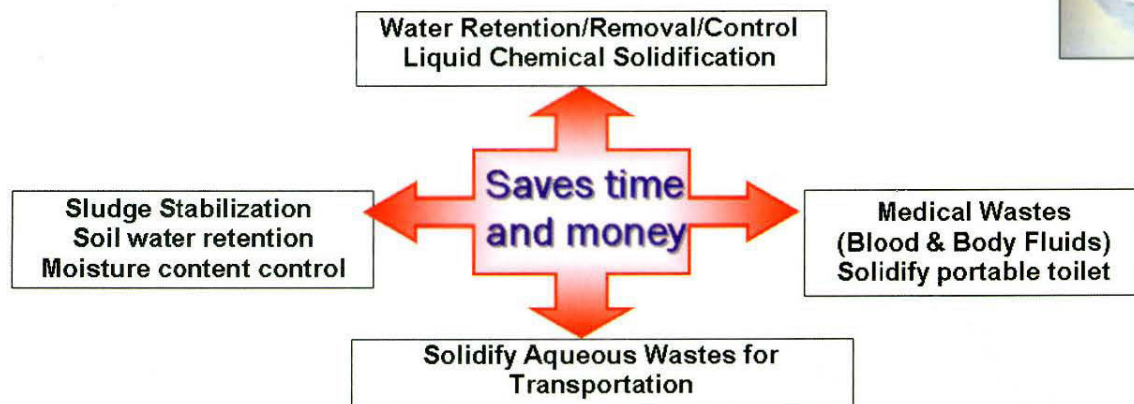
- ☑ Is Non-Toxic, Non-Hazardous; does not produce heat or off-gasses.
- ☑ Meets and exceeds EPA, OSHA, & ANSI Guidelines for absorbent material performances
- ☑ Passes the Paint Filter Liquid Test (Method 9095)
- ☑ Non-Biodegradable polymer (Per 40 CFR 264.314 (e) (1) (ii))
- ☑ Expands by less than 1% when hydrated
- ☑ SEG certified incinerable material with heat value of 5560 BTU/lbs.
- ☑ Strong ion exchange capability allows for heavy metals to be bound & waters to pass TCLP
- ☑ Absorbs over 250 times its weight in water
- ☑ Freeze-Thaw Tested - will not release liquids after freezing and subsequent heating to 160° F
- ☑ Produces over 5,000 BTU's per pound when incinerated
- ☑ Solidifies most aqueous solutions in less than 2 minutes—does not require mixing.

#### **Applications:**

*General spills, industrial facilities, medical facilities, classrooms, landfills, public transportation vehicles, flower shops, grocery stores, veterinary clinics & more!*



Easy to apply  
Easy to clean



#### **Typical Absorption Ratios AUNL g/g**

Free Swell in D.I. Water	250
1% NaCl solution	42
10ppm Cadmium	142
30ppm Cadmium	47
10ppm Chromium	130
30ppm Chromium	104
10ppm Lead	137
30ppm Lead	110

Part#	Description	Weight
AS-SB	Aqua Sorb in 16 oz. shaker bottle - 12/case	12 lbs.
AS-PAIL1	Aqua Sorb in 1 gallon pail	7 lbs.
AS-PAIL3	Aqua Sorb in 3.5 gallon pail	25 lbs.
AS-PAIL5	Aqua Sorb in 5 gallon D.O.T. bucket	40 lbs.
AS-DRM	Aqua Sorb in 350 pound drums	350 lbs.
AS-SAK	Aqua Sorb in 2000 pound super sacks	2000 lbs.



Solidified Water  
will not leach



**Tooling Components Inc.**  
**Mold-Die-Polishing Supplies**

8349 WEST HIGH STREET EXT.

UNION CITY, PA. 16438

TOLL FREE: 877-438-7657 • FAX: 814-438-8146

[www.toolingcomponentsinc.com](http://www.toolingcomponentsinc.com)

[sales@toolcompinc.com](mailto:sales@toolcompinc.com)





## POSSIBLE USES :

**Autopsy Absorbents** - stops/cleans up leakage of body fluids - autopsy, funeral homes, hospitals, etc.

**Baby and Adult Diapers** - an estimated 2 billion pounds per year in the U.S. alone

**Bait and Gaming Gels** - holds scent and soluble baits in traps - trap baits, etc.

**Body Cooling Gels for Apparel** - bandanas, headbands, wrist bands - work, sports, etc.

**Body fluids absorption** - eliminates odors and reduces possibility of airborne pathogens, vapor suppression, - first responders, medical cleaning staff, school janitorial, etc.

**Cleaning Gels** - holds cleaner on vertical services - rust removers, cleaning agents, etc.

**Fragrance Gels** - reduces evaporation, acts to time release - deodorizers, etc.

**Fire Fighting Gel** - keeps water on the fire surface - forest fires, fire breaks, structure coating, etc.

**Floral Arrangements** - holds water to keep from spilling during deliveries, also allows for slow evaporation of water, keeping flowers hydrated for longer periods of time.

**Hazardous Waste Control** - stabilization and solidification of commercial wastewater, decontamination water, spilled chemicals and pesticides - first responders, waste management personnel, etc.

**Heat Packs** - for ease and control of heat pads - body heat packs, food, etc.

**Ice Packs** - keeps water colder for longer periods - fish, flowers, food, etc.

**Kitty Litter Additive** - holds it plus reduces odors.

**Medical Waste Absorbents** - stabilizes and cleans up leakage of body fluids, reducing spread of germs; vapor suppression: blood, urine, vomit, etc - hospitals, portable toilets, public transportation, school buses, scientific laboratories, etc.

**Oil/Water Separation** - removes water from fuel tanks, filters - farm tractors, trucking, boating, etc.

**Pesticide Gels** - makes liquids manageable and remains effective for a much long period of time - spider control in rafters, termites, etc.

**Sludge water treatment** - gels sludge water for stabilization or solid waste disposal - industry, water treatment, etc.

**Solidify Liquid Wastes** - gel liquids for solid waste disposal - industry, bio-medical, etc.

**Soil hydration** - blend into soil to increase water retention and slow the release of moisture in soil, reduces erosion - environmental, farming industries, etc.

**Spill Control** - picks up any aqueous liquid spills quickly; vapor suppression, solidifies aqueous chemicals for safer transportation, reduces risks for secondary contamination, etc. - hazmat teams, lawn spray companies, manufacturing companies, transportation companies, etc.

## MATERIAL SAFETY DATA SHEET

### Section 1: Company Information

Tooling Components Inc. 8349 West High St.  
Telephone: Toll free 877-438-76587 Union City PA 16438

### Section 2: Physical/Chemical Characteristics

Appearance & Odor: Off-White color, Powder, Odorless  
Vapor Pressure/Vapor Density: N/A  
Bulk Density: 0.5 g/cc Melting Point: N/A  
Evaporation Rate: N/A Boiling Point: N/A

### Section 3: Hazardous Ingredients/Identity Information

Hazardous Components: OSHA PEL - ACGIH TLV -  
Other Components: Respirable particulate (dust)  
Recommended Exposure Limit (dust) 0.05 mg/m3

Chemical Name	CAS No.	%
Sodium Polyacrylate, Lightly Crosslinked	25608-12-2	92 to 98
Water	7732-18-5	2 to 8
Acrylic Acid	79-10-7	<0.08

NFPA/HMIS: Health: 1 Reactivity: 0 Fire: 0 Specific Hazard: 0  
DOT Class: Not Regulated

### Section 4: Fire & Explosion Hazard Data

Flash Point: Not available  
Flammable Limits: Not available LEL - - UEL - -  
Extinguishing Media: Any  
Special Fire Fighting Procedures: As with any fire, wear positive pressure, self contained breathing apparatus in any closed space when fighting fires.  
Unusual Fire/Explosion Hazards: Under certain confined conditions, a concentrated fine dust of this material in air may cause a dust explosion if ignited.

### Section 5: Reactivity Data

Stability: Stable Incompatibility: Strong oxidizers  
Hazardous Decomposition or Byproducts: Thermal decomposition releases CO, CO2, Hydrocarbons  
Hazardous Polymerization: Will not occur  
Conditions to Avoid: None Known

### Section 6: Health Hazard Data

Route (s) of Entry: Inhalation, Skin, Eyes  
Health Hazards: Contact with eyes, skin or clothing may cause irritation. Care must be taken to minimize exposure and prevent workplace inhalation of respirable dust. Respiratory protection is required for exposures above the recommended level of respirable dust.  
Carcinogenicity: None known  
Signs/Symptoms of Exposure: Slight irritant symptoms  
Conditions generally aggravated by exposure: Respiratory Ailments

### Emergency and First Aid Procedures:

Eyes: Flush with large quantity of water, consult physician  
Skin: Wash with soap and water.  
Inhalation: Remove to fresh air, consult physician

### Section 7: Control Measures

Respiratory Protection: Use NIOSH/MSHA approved or equivalent with high efficiency filter for particulate levels above 0.05 mg/m3.  
Ventilation: As needed to control airborne dust levels below the applicable exposure limits.  
Protective Gloves: Impervious/rubber Eye Protection: Safety goggles  
Other protective clothing or equipment: None  
Work/Hygienic Practices: Good Housekeeping Practices

### Section 8: Precautions for Safe Handling & Use

Steps to be taken in case material is released or spilled: Vacuum (using HEPA filter equipped system) if possible to avoid generating airborne dust.  
Waste Disposal Method: Dispose of in accordance with federal, state & local regulations.  
Precautions to be taken in handling and storing: Store in a cool, dry place. Avoid breathing powder. Avoid skin & eye contact.

### Section 9: Supplemental Information

**DISCLAIMER:** The information contained herein is made available solely for consideration, investigation, and verification by the original recipients hereof. Users should consider this information only as a supplement to other information gathered by or available to them. Users should make independent determinations of the suitability and completeness of information from all sources to assure proper use and disposal of these materials for the safety and health of employees, customers, and the environment. This hazard information is not a substitute for risk assessment under actual conditions of use. Users have the responsibility to keep currently informed on chemical hazard information, to design and update their own programs, and to comply with all applicable national, federal, state and local laws and regulations regarding safety, occupational health, right to know, and environmental protection. Aqua Sorb® does not cause hazardous materials to become non hazardous-aqueous liquids are merely and temporarily changed to a gelled semi-solid state.



# **HAND CARE:** A HEAVY DUTY SOLVENT RESISTANT PRE-WORK PROTECTIVE CREAM DESIGNED FOR INDUSTRIAL AND REPAIR SETTINGS.

(ALL-NATURAL PROTECTANTS)

GREASE & SILICONE FREE

MADE IN THE USA



**#MN-12 1LB TUB**

## **MAN-O GUARDS AGAINST**

ASPHALT & TAR  
BORAX  
CALCIUM CARBIDE  
CARBON BLACK  
CARBON TETRACHLORIDE  
COOLING LUBRICANTS  
CUTTING COMPOUNDS  
(NO WATER CONTENT)  
DIESEL FUEL  
DRIVEWAY SEALER  
DRY SODA ASH  
DYES  
FIBERGLASS

FINELY POWDERED METALS  
GASOLINE & OIL  
GRAPHITE  
GREASE  
KEROSENE  
LACQUERS  
NAPHTHA  
PAINTS & ENAMELS  
PRINTER'S INK  
SULPHUR  
TOLUOL  
VARNISHES  
WAXES

(Material Safety Data Sheets available)



**#GC-QT.**



**#GC-12 6oz.**

## **GLOVE COTE 720**

### **A WATER RESISTANT PRE-WORK PROTECTIVE LOTION**

Protects against water based irritants such as:

WATER SOLUBLE COOLANTS AND CUTTING FLUIDS,  
TRANSMISSION FLUID, WATER BASED INK & DYES,  
SALTS, ALKALINES, PAINTS, LIGHT GRAPHITE,  
STAINS, LACQUERS, AND MORE.



**6 Oz. Bottle  
1000ml Refill Insert**

## **KEEP KLEEN** (Water/Waterless)

HAND CLEANER WITH PUMICE AND MOISTURIZERS  
TO KEEP HANDS FROM DRYING OUT. MELTS AWAY  
HARD TO CLEAN GREASE, INKS, OILS, AND SOME PAINTS.

**VOC Less than 5%**

Phone Toll Free: (877)438-7657 Fax: (814)438-8146

www.toolingcomponentsinc.com email: sales@toolcompinc.com



**Tooling Components, Inc.**



## **MAN-O: Protects Skin and Speeds Clean-up**

MAN-O contains protective, soothing lanolin. It may be used by both men and women on the skin on any part of the body, with absolute safety. MAN-O protects against skin irritations from solvents, resins, paints, cutting oils, dyes, etc. MAN-O contains no coarse substances, is greaseless, non-caustic and water-soluble. MAN-O is silicone free.

### **Solvent Resistant Formula**

#### **MAN-O Guards Against:**

Asphalt & Tar	Driveway Sealer	Lacquer Thinners
Borax	Dry Soda Ash	Naphtha
Calcium Carbide	Dyes	Paints & Enamels
Carbon Black	Fiberglass	Printer's Ink
Carbon Tetrachloride	Finely Powdered Metals	Sulfur
Cooling Lubricants	Gasoline & Oil	Toluene
Creosote	Graphite	Varnishes
Cutting Compound	Greases	Waxes
(No Water Content)	Kerosene	Laboratory Chemicals
Diesel Fuel	Lacquers	Cast Iron Dust

## **GLOVE COTE 720: Protective Barrier Skin Lotion**

Glove Cote 720 contains protective moisturizers and emollients that help heal and condition your skin while it provides a protective barrier. Glove Cote 720 also protects against irritation from water-soluble coolants, cutting fluids, dyes, salts, alkalines, and other wet-work processing. **Water Resistant Formula**

#### **Glove Cote 720 Protects Against:**

Alkalines	Finely Powdered Materials	Salts
Calcium Carbide	Graphite	Sterilizing Fluids/Agents
Carbon Tetrachloride	Kerosene	Sulfur
Cooling Lubricants	Lacquers	Toluene
Cutting Compounds	Lacquer Thinners	Varnishes
Diesel Fuel	Latex	Waxes
Dry Soda Ash	Naphtha	Laboratory Chemicals
Dyes	Paints & Enamels	Ultraviolet Inks



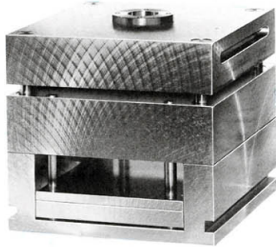
### **Directions for use of Glove Cote 720 and MAN-O:**

Before exposure to dirt, grease, grime, paints and other harsh chemicals, apply a "primer" layer of MAN-O or Glove Cote 720 generously to clean, dry hands, wrists, arms, or other skin areas to be protected. Be certain to apply under fingernails and around cuticles. Rub in thoroughly until MAN-O or Glove Cote 720 disappears. Wait approximately one minute until primer layer dries. Then, apply a second layer of MAN-O for best protection results. To remove, simply use soap and water, MAN-O or Glove Cote 720 skin cream or lotion leaves your skin soft and smooth. If hands are washed during the course of the day, only the second layer need be applied, as the primer layer should remain after washing. Applied prior to contact with hard to remove materials, MAN-O or Glove Cote 720 makes clean-up faster and more effective.

# Insulator Plates

## Custom Cut / Standard Sheets

**Your Base Your Choice**



Send any File type for Quoting  
Blanks or Custom

\* Fast turn around / Consistent quality  
Competitive Pricing

\* Thickness Tolerance +/- 0.002

\* Sizes: up to 4' x 8' in diameter,  
up to 4" thick.

\* Standard Edges saw cut +/- 0.015  
(Can Specify other, break sharp edges, sand, per print)



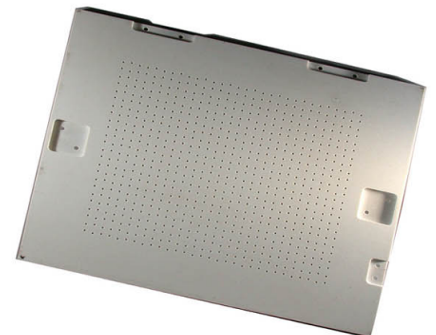
**White Board** is ideally suited for reducing heat losses from  
Plastic & Zinc Die Cast Molds.

With operating temperatures up to 550° F its thermal insulating  
capability provides faster startups and increased operating  
efficiency while its high strength provides long life. White board  
is easily cut & machined with standard metal working equipment.

General Information	Procedure	English Units	Typical Values	Metric Units	Typical Values
Part Number			HT200		HT200
Standard Color			White		White
Maximum Service Temp.		°F	550	°C	288
Continuous Use Temp.		°F	412	°C	200
<b>Mechanical Properties</b>					
Flexural Strength	ASTM D 790	Psi	31,000	Mpa	124
Compressive Strength					
@75°F / 24°C	ASTM D 695	Psi	49,000	Mpa	338
@302°F / 150°C	ASTM D 695	Psi	27,000	Mpa	186
@392°F / 200°C	ASTM D 695	Psi	18,000	Mpa	124
@550°F / 288°C	ASTM D 695	Psi	17,000	Mpa	117
Compressive Modulus	ASTM D 695	Psi	1,800,000	Mpa	12,411
IZOD Impact Strength (notched)	ASTM D 256	Ft. lb./in.	8	J/cm	4.3
<b>Electrical Properties</b>					
Electrical Strength – Perpendicular S/T in Air	ASTM D 149	Vpm	50	kV/mm	2
<b>Flame Resistance Properties</b>					
UL Subject 94	UL 94	0.94 in.	HB	2.4 mm	HB
<b>Physical Properties</b>					
Water Absorption	ASTM D 570	% by wt.	0.2	% by wt.	0.2
Specific Gravity	ASTM D 792	lbs/ft³	123	g/cm³	1.97
Coefficient of Thermal Expansion					
Across Thickness	ASTM D 696	In/In/°C x 10 <sup>-5</sup>	11.62	10 <sup>-6</sup> /K	116
Across Surface	ASTM D 696	In/In/°C x 10 <sup>-5</sup>	2.21		22
Thermal Conductivity	ASTM C 177	BTU•In/Hr•Ft²•°F	1.9	W/m•K	0.27



- \* High Hot Compressive Strength
- \* Low Thermal Conductivity
- \* Oil and Moisture Resistant
- \* Reduces Heat Loss
- \* Helps Control Temperature
- \* Faster Mold Startup



Phone Toll Free: (877)438-7657

Fax: (814)438-8146

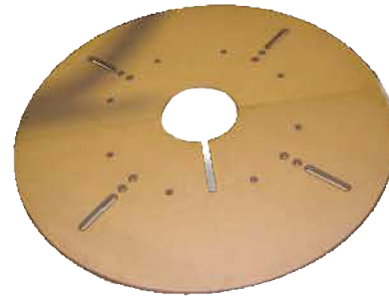
www.toolingcomponentsinc.com email: sales@toolcompinc.com



**Tooling Components, Inc.**



# Platen Insulaton



Haysite's family of mold and platen insulation products are specially engineered fiberglass reinforced thermoset polyester composites which offer superior energy efficiency, temperature control, and durability for high temperature mold and platen thermal applications.

When compared to other available insulating materials, Haysites' Thermalate® and Heatmeiser® provide proven, cost effective products for the plastic or rubber molder.

## THERMALATE® H320/H330

Haysite Thermalate® composites offer a number of specific advantages over other insulation materials:

- Asbestos Free.
- Cost Effective: Increased efficiency allows for short payback.
- Low Thermal Conductivity/Energy Efficient: Saves and allows more precise temperature control.
- High Heat Resistance: Designed to operate at temperatures up to 550°.
- High Compressive Strength: Will not take a compressive "set", causing mold alignment problems, when subject to extremely high molding pressures.
- Tough and Durable: Does not crack or break easily during mold setup or tear down. More durable than mica or asbestos materials.
- Resists Oils and Fluids: Other more absorbent insulators, such as concrete asbestos, can deteriorate or alter their thermal conductivity.
- No Maintenance.

## HEATMEISER® H340

Heatmeiser® exemplifies Haysite's engineering and R&D capabilities. A true breakthrough material in thermal insulation sheet, Heatmeiser® is a specially engineered composite offering superior energy efficiency, temperature control and durability for high temperature mold jacket and platen thermal insulation applications. Heatmeiser® thermal conductivity results separate this material from all other glass reinforced products.

Typical Properties	Test Method	Thermalate® H320	Thermalate® H330	Heatmeiser® H340
Maximum Service Temperature		450 F	550 F	550 F
Compressive Strength PSI, Condition A	D-695	42,000	44,000	18,100
@300 Degree F		23,400	31,700	19,000
@400 Degree F		16,100	30,600	19,300
@500 Degree F		N/A	26,200	20,000
Impact Strength Izod Ft. Lbs./in. notch	D256	10	13	9
Flexural Strength, PSI	D-790	22,000	22,800	20500
Moisture Absorption, % @ 3/8" Sanded	D-570	.25	.25	0.25
Thermal Conductivity (K Factor) BTU/Hr/Ft2/Ino F	D-177	1.90	1.85	1.20
Co-Efficient of Thermal Expansion In/In/o C	D-696	1.40 x 10-5	1.33 x 10-5	1.17 x 10-5
Color		Brown	Orange	Light Gray

## COMPARATIVE PROPERTIES OF PRESS INSULATION MATERIALS

Insulation Material	Cost Factor	Compression Strength PSI	Moisture Absorption %	K Factor	Maximum Operating Temperature °F	Impact Strength
Concrete Asbestos	1.0	14,000	22.00	4.50	600	0.60
Calcium Silicate	1.2	2,400	85.00	0.88	1,200	0.25
Thermalate® H320	2.9	42,000	0.25	1.90	450	10.00
Thermalate® H330	3.5	44,000	0.25	1.85	550	13.00
Heatmeiser® H340		18,100	0.25	1.20	550	9.00
G-3 (Reinforced Phenolic)	6.0	50,000	1.50	2.15	350	6.50
G-11 (Reinforced Epoxy)	7.5	60,000	0.10	2.03	320	7.00
G-7 (Reinforced Silicone)	15.0	45,000	0.15	2.20	460	8.50
Mica	16.5	60,000	2.77	0.87	1,000	--

- Standard Stocked Sheet Sizes: 36"x72" and 48"x96". 48"x60" is available upon request: (Minimum order quantity will apply)
- Thickness available: 1/4" to 2".
- Thickness Specification: 1/2" and under...+/- .002, Over 1/2"...+/- .005
- Flatness Specification:
- All Platen Insulation is sanded on both sides.
- Special cut sizes and unsanded material is also available upon special request.

Phone Toll Free: (877)438-7657 Fax: (814)438-8146

www.toolingcomponentsinc.com email: sales@toolcompinc.com

**Tooling Components, Inc.**



## Chains



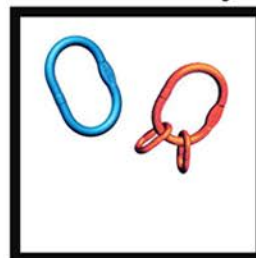
## Loadbinder



## Connection Links



## Master Link / Link Assembly



## Lifting Points



## Grab Hooks



## Eye Sling Hook



## Clevis Sling/Grab Hook



## Clevis Shorting Hook Shackle / C Hook



## Foundry Hooks / Plate Hook



## Clevis Safety Locking Hook



## Safety Locking Hook



**Inspection and testing should be carried out in accordance with all relevant regulations.**

## Continuous Maintenance

Chain and fittings must be withdrawn from service if any damage or deformation is noticed.

## Maintenance

Keep a record for all chain slings, and inspect them regularly in accordance with federal regulations and standards. (ASME B30.9)

## Inspection Procedure

Each link and each attachment shall be examined individually, taking care to expose inner link surfaces of the chain and attachments.

## Visual Inspection

Check for wear, nicks, cracks, breaks, gouges, stretch, bends, weld splatter, discoloration from excessive heat and throat opening of hooks.

## Measuring

The medium link thickness must not be reduced by more than 10% of the nominal diameter on any part of the chain. The elongation of the chain should not exceed 5% at any point.

**Grade 120 BLUE**

**Grade 100 ORANGE**

**Grade 80 RED**

**Grade 50 Stainless**

**Full catalog  
 available  
 online / by mail.**

## Lifting...

...is dangerous work  
 only competent  
 persons are allowed  
 to do.  
 Please keep in  
 mind all the hazards  
 and risks covered  
 in ASTM-A906,  
 ISO 3056,  
 EN 818-6  
 and other  
 relevant standards.







# MOLD/DIE POLISHING



HYPREZ® DiaMold® Polishing Systems

*Call for price/delivery  
full catalog  
available*



Phone Toll Free: (877)438-7657

Fax: (814)438-8146

www.toolingcomponentsinc.com email: sales@toolcompinc.com

**Tooling Components, Inc.**



## Hyprez® Lubricants

### Importance of proper lubrication

Lubricants used with any diamond compound should be compatible with the carrier used to give the best cutting action possible, maintain even dispersion of diamonds and produce uniform finishes. The proper lubricant will reduce lapping time and also reduce the amount of diamond compound needed to complete the lapping operation.

### Hyprez Hyprelube®

A synthetic-based type lubricant, Hyprelube was developed especially for use with Formula L and Diamond Die compounds used to finish wire drawing and cold heading dies. This superior lubricant, with its penetrating qualities and oil/water solubility, not only increases cutting action but assures continued lubrication of every diamond particle throughout the lapping cycle.

### OS Type IV Lubricant

This low-viscosity, oil soluble lubricant is compatible with oil-based slurries and compounds, including Hyprez® Five Star®, Formula L, Hyprez OS and S1313-T4. In proper concentrations, it is also partially compatible with Hyprez W compound.

### W Lubricant

This water-based fluid is thicker than OS Type IV and is compatible with Hyprez W compound and S4889 slurry.

### Speciality Lubricants

Engis also formulates special lubricants to complement speciality compounds and slurries.



W Lubricant



Hyprelube®



OS Type IV Lubricant

### Available Packaging

All Hyprez lubricants are available in the following containers:

- 4 oz. bottles
- 1 liter plastic bottles
- 1 gallon cans
- 1 pint glass bottles
- 1 quart bottles
- 5 gallon drums
- 1 pint pump spray (not shown) is also available for use with lubricants.

	W Lubricant	Hyprelube	OS Type IV Lube
4 oz.	510.W.4 oz	510.HL.4 oz	510.2030
1 pt.	510.W.1 pt	510.HL.1 pt	510.2029
1 qt.	510.W.1 qt	510.HL.1 qt	510.2028
1 gal.	510.W.1 ga	510.HL.1 ga	510.2027
16 oz. Dip Jar		510.2082	



# Ceramic Stones - Stick - Brushes

## (Sticks)

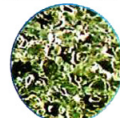
Dimensions (mm) W x H x L			RED #1200	WHITE #1000	BLUE #800	BLACK #600	ORANGE #400	LIGHT BROWN #300	DARK BROWN #220	VIOLET #120
0.3	4	100	AR-0304M	AW-0304M	AB-0304M	AP-0304M	AO-0304M	AL-0304M	AD-0304M	-
0.4	4	100	AR-0404M	AW-0404M	AB-0404M	AP-0404M	AO-0404M	AL-0404M	AD-0404M	-
0.5	4	100	AR-0504M	AW-0504M	AB-0504M	AP-0504M	AO-0504M	AL-0504M	AD-0504M	-
0.5	4	150	AR-0504L	AW-0504L	AB-0504L	AP-0504L	AO-0504L	AL-0504L	AD-0504L	-
0.5	6	100	AR-0506M	AW-0506M	AB-0506M	AP-0506M	AO-0506M	AL-0506M	AD-0506M	-
0.5	6	150	AR-0506L	AW-0506L	AB-0506L	AP-0506L	AO-0506L	AL-0506L	AD-0506L	-
0.5	10	100	AR-0510M	AW-0510M	AB-0510M	AP-0510M	AO-0510M	AL-0510M	AD-0510M	-
0.5	10	150	AR-0510L	AW-0510L	AB-0510L	AP-0510L	AO-0510L	AL-0510L	AD-0510L	-
0.8	4	100	AR-0804M	AW-0804M	AB-0804M	AP-0804M	AO-0804M	AL-0804M	AD-0804M	-
0.8	4	150	AR-0804L	AW-0804L	AB-0804L	AP-0804L	AO-0804L	AL-0804L	AD-0804L	-
0.8	6	100	AR-0806M	AW-0806M	AB-0806M	AP-0806M	AO-0806M	AL-0806M	AD-0806M	-
0.8	6	150	AR-0806L	AW-0806L	AB-0806L	AP-0806L	AO-0806L	AL-0806L	AD-0806L	-
0.8	10	100	AR-0810M	AW-0810M	AB-0810M	AP-0810M	AO-0810M	AL-0810M	AD-0810M	-
0.8	10	150	AR-0810L	AW-0810L	AB-0810L	AP-0810L	AO-0810L	AL-0810L	AD-0810L	-
1.0	1	100	AR-1001M	AW-1001M	AB-1001M	AP-1001M	AO-1001M	AL-1001M	AD-1001M	-
1.0	2	100	AR-1002M	AW-1002M	AB-1002M	AP-1002M	AO-1002M	AL-1002M	AD-1002M	AV-1002M
1.0	4	100	AR-1004M	AW-1004M	AB-1004M	AP-1004M	AO-1004M	AL-1004M	AD-1004M	AV-1004M
1.0	4	150	AR-1004L	AW-1004L	AB-1004L	AP-1004L	AO-1004L	AL-1004L	AD-1004L	AV-1004L
1.0	6	100	AR-1006M	AW-1006M	AB-1006M	AP-1006M	AO-1006M	AL-1006M	AD-1006M	AV-1006M
1.0	6	150	AR-1006L	AW-1006L	AB-1006L	AP-1006L	AO-1006L	AL-1006L	AD-1006L	AV-1006L
1.0	8	150	AR-1008M	AW-1008M	AB-1008M	AP-1008M	AO-1008M	AL-1008M	AD-1008M	AV-1008M
1.0	8	150	AR-1008L	AW-1008L	AB-1008L	AP-1008L	AO-1008L	AL-1008L	AD-1008L	AV-1008L
1.0	10	100	AR-1010M	AW-1010M	AB-1010M	AP-1010M	AO-1010M	AL-1010M	AD-1010M	AV-1010M
1.0	10	150	AR-1010L	AW-1010L	AB-1010L	AP-1010L	AO-1010L	AL-1010L	AD-1010L	AV-1010L
1.5	1.5	100	AR-1515M	AW-1515M	AB-1515M	AP-1515M	AO-1515M	AL-1515M	AD-1515M	-
1.5	4	100	AR-1504M	AW-1504M	AB-1504M	AP-1504M	AO-1504M	AL-1504M	AD-1504M	AV-1504M
1.5	4	150	AR-1504L	AW-1504L	AB-1504L	AP-1504L	AO-1504L	AL-1504L	AD-1504L	AV-1504L
1.5	6	100	AR-1506M	AW-1506M	AB-1506M	AP-1506M	AO-1506M	AL-1506M	AD-1506M	AV-1506M
1.5	6	150	AR-1506L	AW-1506L	AB-1506L	AP-1506L	AO-1506L	AL-1506L	AD-1506L	AV-1506L
1.5	10	100	AR-1510M	AW-1510M	AB-1510M	AP-1510M	AO-1510M	AL-1510M	AD-1510M	AV-1510M
1.5	10	150	AR-1510L	AW-1510L	AB-1510L	AP-1510L	AO-1510L	AL-1510L	AD-1510L	AV-1510L
2.0	2	100	AR-2002M	AW-2002M	AB-2002M	AP-2002M	AO-2002M	AL-2002M	AD-2002M	-
2.0	4	100	AR-2004M	AW-2004M	AB-2004M	AP-2004M	AO-2004M	AL-2004M	AD-2004M	AV-2004M
2.0	4	150	AR-2004L	AW-2004L	AB-2004L	AP-2004L	AO-2004L	AL-2004L	AD-2004L	AV-2004L
2.0	6	100	AR-2006M	AW-2006M	AB-2006M	AP-2006M	AO-2006M	AL-2006M	AD-2006M	AV-2006M
2.0	6	150	AR-2006L	AW-2006L	AB-2006L	AP-2006L	AO-2006L	AL-2006L	AD-2006L	AV-2006L
2.0	10	100	AR-2010M	AW-2010M	AB-2010M	AP-2010M	AO-2010M	AL-2010M	AD-2010M	AV-2010M
2.0	10	150	AR-2010L	AW-2010L	AB-2010L	AP-2010L	AO-2010L	AL-2010L	AD-2010L	AV-2010L
3.0	4	100	AR-3004M	AW-3004M	AB-3004M	AP-3004M	AO-3004M	AL-3004M	AD-3004M	AV-3004M
3.0	4	150	AR-3004L	AW-3004L	AB-3004L	AP-3004L	AO-3004L	AL-3004L	AD-3004L	AV-3004L
3.0	6	100	AR-3006M	AW-3006M	AB-3006M	AP-3006M	AO-3006M	AL-3006M	AD-3006M	AV-3006M
3.0	6	150	AR-3006L	AW-3006L	AB-3006L	AP-3006L	AO-3006L	AL-3006L	AD-3006L	AV-3006L
3.0	10	100	AR-3010M	AW-3010M	AB-3010M	AP-3010M	AO-3010M	AL-3010M	AD-3010M	AV-3010M
3.0	10	150	AR-3010L	AW-3010L	AB-3010L	AP-3010L	AO-3010L	AL-3010L	AD-3010L	AV-3010L

## (Brushes)



Part #	Color	Brush Dia.	Brush Lgth.	Shank Dia.	O.A.L.	Shank Lgth.
A11-EB06M	Red	6mm/.236	20mm/.787	3mm/.118	58mm/2.28	28mm/1.102
A21-EB06M	White	6mm/.236	20mm/.787	3mm/.118	58mm/2.28	28mm/1.102

BEFORE AFTER



Cutting Fiber Improves  
Surface Finish in  
a short time!

MAX RPM 12,000

Phone Toll Free: (877)438-7657 Fax: (814)438-8146

www.toolingcomponentsinc.com email: sales@toolcompinc.com



**Tooling Components, Inc.**



# Ceramic Stones - Rods - Diamond - Heat Resistant

## (Rods)

Dimensions (mm)		RED #1200	WHITE #1000	BLUE #800	BLACK #600	ORANGE #400	LIGHT BROWN #300	GRAY #220
Diameter	Overall Length							
1	50	PR-10S	PW-10S	PB-10S	PP-10S	PO-10S	PL-10S	PM-10S
1	100	PR-10M	PW-10M	PB-10M	PP-10M	PO-10M	PL-10M	PM-10M
1.5	50	PR-15S	PW-15S	PB-15S	PP-15S	PO-15S	PL-15S	PM-15S
1.5	100	PR-15M	PW-15M	PB-15M	PP-15M	PO-15M	PL-15M	PM-15M
2	50	PR-20S	PW-20S	PB-20S	PP-20S	PO-20S	PL-20S	PM-20S
2	100	PR-20M	PW-20M	PB-20M	PP-20M	PO-20M	PL-20M	PM-20M
2.34	50	PR-234S	PW-234S	PB-234S	PP-234S	PO-234S	PL-234S	PM-234S
2.34	100	PR-234M	PW-234M	PB-234M	PP-234M	PO-234M	PL-234M	PM-234M
3	50	PR-30S	PW-30S	PB-30S	PP-30S	PO-30S	PL-30S	PM-30S
3	100	PR-30M	PW-30M	PB-30M	PP-30M	PO-30M	PL-30M	PM-30M
3	150	PR-30L	PW-30L	PB-30L	PP-30L	PO-30L	PL-30L	PM-30L
6	50	-	-	-	-	-	-	PM-60S
6	100	-	-	-	-	-	-	PM-60M

## (Diamond)

Best Solution for EDM scale removal.

\*Maximum productivity.

### STICK

Dimensions (mm)			BLACK #200	BLUEGREEN #400	GRAY #800
W	H	L			
1	4	100	DM1004M	DF1004M	DS1004M
1	6	100	DM1006M	DF1006M	DS1006M
1	10	100	DM1010M	DF1010M	DS1010M

### ROD

Dimensions (mm)		BLUEGREEN #400
Ø	Overall Length	
3	50	PDF30S
3	100	PDF30M

## (Heat Resistant)

Doesn't soften, outstanding efficiency.

### STICK

Dimensions (mm)			RED #1200	BLUE #800	DARK BROWN #220	VIOLET #120
T	W	L				
1	4	100	HR-1004M	HB-1004M	HD-1004M	HV-1004M
1	6	100	HR-1006M	HB-1006M	HD-1006M	HV-1006M
1	10	100	HR-1010M	HB-1010M	HD-1010M	HV-1010M
2	4	100	HR-2004M	HB-2004M	HD-2004M	HV-2004M
2	6	100	HR-2006M	HB-2006M	HD-2006M	HV-2006M
2	10	100	HR-2010M	HB-2010M	HD-2010M	HV-2010M

Phone Toll Free: (877)438-7657 Fax: (814)438-8146

www.toolingcomponentsinc.com email: sales@toolcompinc.com

**Te**  
**Tooling Components, Inc.**



# DIAMOLD® DIAMOND COMPOUND

Micron Size	Product Code	10 Gram Syringe		20 Gram Syringe		Compound Color
		Part Number	Price	Part Number	Price	
1	1-DiaMold	340.5120	\$ 12.05	340.5130	\$ 20.70	Ivory
3	3-DiaMold	340.5121	\$ 14.55	340.5131	\$ 25.85	Yellow
6	6-DiaMold	340.5122	\$ 14.55	340.5132	\$ 25.85	Orange
9	9-DiaMold	340.5123	\$ 15.65	340.5133	\$ 28.90	Green
15	15-DiaMold	340.5124	\$ 15.65	340.5134	\$ 28.90	Blue
30	30-DiaMold	340.5125	\$ 15.65	340.5135	\$ 28.90	Red
45	45-DiaMold	340.5126	\$ 15.65	340.5136	\$ 28.90	Brown
60	60-DiaMold	340.5127	\$ 15.65	340.5137	\$ 28.90	White

# HYPREZ<sup>®</sup> L DIAMOND COMPOUND

Micron Size	Product Code	5 Gram Syringe		18 Gram Syringe		Compound Color
		Part Number	Price	Part Number	Price	
1/10	0.10(L)STD-MA	101.1002	\$ 12.05	101.1003	\$ 42.70	Gray
1/4	0.25(L)STD-MA	101.1022	\$ 12.05	101.1023	\$ 42.70	Gray
1/2	0.5(L)STD-MA	101.1042	\$ 12.05	101.1043	\$ 42.70	Gray
1	1(L)MED-MA	101.1062	\$ 5.85	101.1063	\$ 20.85	Ivory
	1(L)STD-MA	101.1082	\$ 7.60	101.1083	\$ 26.75	
	1(L)STR-MA	101.1102	\$ 10.40	101.1103	\$ 36.70	
3	3(L)MED-MA	101.1122	\$ 10.95	101.1123	\$ 38.70	Yellow
	3(L)STD-MA	101.1142	\$ 17.35	101.1143	\$ 61.55	
	3(L)STR-MA	101.1162	\$ 24.45	101.1163	\$ 86.30	
6	6(L)MED-MA	101.1182	\$ 15.15	101.1183	\$ 53.60	Orange
	6(L)STD-MA	101.1202	\$ 21.60	101.1203	\$ 76.40	
	6(L)STR-MA	101.1222	\$ 27.80	101.1223	\$ 98.20	
9	9(L)MED-MA	101.1242	\$ 18.00	101.1243	\$ 63.50	Green
	9(L)STD-MA	101.1262	\$ 25.85	101.1263	\$ 91.30	
	9(L)STR-MA	101.1281	\$ 29.75	101.1283	\$ 105.15	
15	15(L)MED-MA	101.1302	\$ 17.35	101.1303	\$ 61.55	Blue
	15(L)STD-MA	101.1322	\$ 23.85	101.1323	\$ 84.30	
	15(L)STR-MA	101.1342	\$ 28.05	101.1343	\$ 99.20	
30	30(L)MED-MA	101.1362	\$ 17.35	101.1363	\$ 61.55	Red
	30(L)STD-MA	101.1382	\$ 28.05	101.1383	\$ 99.20	
	30(L)STR-MA	101.1402	\$ 40.15	101.1403	\$ 141.90	
45	45(L)MED-MA	101.1422	\$ 17.35	101.1423	\$ 61.55	Brown
	45(L)STD-MA	101.1442	\$ 28.05	101.1443	\$ 99.20	
	45(L)STR-MA	101.1462	\$ 40.15	101.1463	\$ 141.90	
60	60(L)MED-MA	101.1482	\$ 26.10	101.1483	\$ 92.30	White
	60(L)STD-MA	101.1502	\$ 29.20	101.1503	\$ 103.20	
	60(L)STR-MA	101.1522	\$ 33.65	101.2121	\$ 119.05	

Prices subject to change without notice.





# HYPREZ<sup>®</sup> C11 DIAMOND COMPOUND

Micron Size	Product Code	5 Gram Syringe		18 Gram Syringe		Compound Color
		Part Number	Price	Part Number	Price	
1/10	0.10(C11)STD-MA	140.1110	\$ 12.05	140.1120	\$ 42.70	Gray
1/4	0.25(C11)STD-MA	140.2030	\$ 12.05	140.1131	\$ 42.70	Gray
1/2	0.5(C11)STD-MA	140.2151	\$ 12.05	140.2152	\$ 42.70	Gray
1	1(C11)MED-MA	140.2045	\$ 5.85	140.1113	\$ 20.85	Light Yellow
	1(C11)STD-MA	140.2047	\$ 7.60	140.1107	\$ 26.75	
	1(C11)STR-MA	140.2294	\$ 10.40	140.1108	\$ 36.70	
3	3(C11)MED-MA	140.2271	\$ 10.95	140.2005	\$ 38.70	Yellow
	3(C11)STD-MA	140.1103	\$ 17.35	140.2006	\$ 61.55	
	3(C11)STR-MA	140.2038	\$ 24.45	140.1112	\$ 86.30	
6	6(C11)MED-MA	140.2001	\$ 15.15	140.2259	\$ 53.60	Orange
	6(C11)STD-MA	140.2003	\$ 21.60	140.2160	\$ 76.40	
	6(C11)STR-MA	140.2039	\$ 27.80	140.2156	\$ 98.20	
9	9(C11)MED-MA	140.2016	\$ 18.00	140.2194	\$ 63.50	Green
	9(C11)STD-MA	140.1104	\$ 25.85	140.2150	\$ 91.30	
	9(C11)STR-MA	140.1111	\$ 29.75	140.2285	\$ 105.15	
15	15(C11)MED-MA	140.2017	\$ 17.35	101.2197	\$ 61.55	Blue
	15(C11)STD-MA	140.1106	\$ 23.85	140.2185	\$ 84.30	
	15(C11)STR-MA	140.1105	\$ 28.05	140.2125	\$ 99.20	
30	30(C11)MED-MA	140.2068	\$ 17.35	140.2070	\$ 61.55	Red
	30(C11)STD-MA	140.2251	\$ 28.05	140.2257	\$ 99.20	
	30(C11)STR-MA	140.1114	\$ 40.15	140.2203	\$ 141.90	
45	45(C11)MED-MA	140.2077	\$ 17.35	140.2076	\$ 61.55	Brown
	45(C11)STD-MA	140.2266	\$ 28.05	140.2261	\$ 99.20	
	45(C11)STR-MA	140.2193	\$ 40.15	140.2195	\$ 141.90	
60	60(C11)MED-MA	140.2204	\$ 26.10	140.2201	\$ 92.30	Gray
	60(C11)STD-MA	140.2267	\$ 29.20	140.2268	\$ 103.20	
	60(C11)STR-MA	140.2254	\$ 33.65	140.2256	\$ 119.05	

Prices subject to change without notice.



# HYPREZ<sup>®</sup> OS DIAMOND COMPOUND

Micron Size	Product Code	5 Gram Syringe		18 Gram Syringe		Compound Color
		Part Number	Price	Part Number	Price	
1/10	0.10(OS)475-MA (STD)	103.1002	\$ 12.05	103.1003	\$ 42.70	Gray
1/4	0.25(OS)475-MA (STD)	103.1022	\$ 12.05	103.1023	\$ 42.70	Gray
1/2	0.5(OS)475-MA (STD)	103.1042	\$ 12.05	103.1043	\$ 42.70	Gray
1	1(OS)48-MA (MED)	103.1062	\$ 5.85	103.1063	\$ 20.85	Blue
	1(OS)47-MA (STD)	103.1082	\$ 7.60	103.1083	\$ 26.75	
	1(OS)45-MA (STR)	103.1102	\$ 10.40	103.1103	\$ 36.70	
3	3(OS)45-MA (MED)	103.1122	\$ 10.95	103.1123	\$ 38.70	Green
	3(OS)40-MA (STD)	103.1142	\$ 17.35	103.1143	\$ 61.55	
	3(OS)35-MA (STR)	103.1162	\$ 24.45	103.1163	\$ 86.30	
6	6(OS)42-MA (MED)	103.1182	\$ 15.15	103.1183	\$ 53.60	Yellow
	6(OS)375-MA (STD)	103.1202	\$ 21.60	103.1203	\$ 76.40	
	6(OS)30-MA (STR)	103.1222	\$ 27.80	103.1223	\$ 98.20	
9	9(OS)40-MA (MED)	103.1242	\$ 18.00	103.1243	\$ 63.50	Red
	9(OS)35-MA (STD)	103.1262	\$ 25.85	103.1263	\$ 91.30	
	9(OS)30-MA (STR)	103.1282	\$ 29.75	103.1283	\$ 105.15	
15	15(OS)40-MA (MED)	103.1302	\$ 17.35	103.1303	\$ 61.55	Brown
	15(OS)35-MA (STD)	103.1322	\$ 23.85	103.1323	\$ 84.30	
	15(OS)30-MA (STR)	103.1342	\$ 28.05	103.1343	\$ 99.20	
30	30(OS)40-MA (MED)	103.1362	\$ 17.35	103.1363	\$ 61.55	Mahogany
	30(OS)30-MA (STD)	103.1382	\$ 28.05	103.1383	\$ 99.20	
	30(OS)20-MA (STR)	103.1402	\$ 40.15	103.1403	\$ 141.90	
45	45(OS)40-MA (MED)	103.1422	\$ 17.35	103.1423	\$ 61.55	Purple
	45(OS)30-MA (STD)	103.1442	\$ 28.05	103.1443	\$ 99.20	
	45(OS)20-MA (STR)	103.1462	\$ 40.15	103.1463	\$ 141.90	
60	60(OS)35-MA (MED)	103.1482	\$ 26.10	103.1483	\$ 92.30	Orange
	60(OS)30-MA (STD)	103.1502	\$ 29.20	103.1503	\$ 103.20	
	60(OS)25-MA (STR)	103.1504	\$ 33.65	103.1505	\$ 119.05	

Prices subject to change without notice.



Phone Toll Free: (877)438-7657 Fax: (814)438-8146

www.toolingcomponentsinc.com email: sales@toolcompinc.com

 **Tooling Components, Inc.**



# Gesswein®

The Right Tools

*Call for  
price\delivery  
full catalog  
available*

**Precision Tools, Equipment and Supplies  
for Finishing, Polishing, Deburring, Grinding,  
Milling, Micro-Welding, Inspecting and Cleaning**

Phone Toll Free: (877)438-7657 Fax: (814)438-8146

[www.toolingcomponentsinc.com](http://www.toolingcomponentsinc.com) email: [sales@toolcompinc.com](mailto:sales@toolcompinc.com)



**Tooling Components, Inc.**



## **Abrasives**

Gesswein Finishing Stones • Ceramic Stones • Stone Holders • Ruby, Crystolon, India, Arkansas Stones • Mounted Stones • Dressing Stones • Cut-off Discs • Grinding Wheels • Rubberized • GMX • G-FLEX • 3M Roloc • Fiber Pads, Wheels, Discs • Coated Abrasives, PSA

## **Ultrasonic Polishers**

Ultramax SF/DF • Ultramax Tooling, Diamond Stones, Ruby Stones, Diamond Files, Supra Ceramic Stones, Gesswein Finishing Stones • Laps, Tool Holders and Adapters

## **Power Tools**

Power Hand 2X Controllers, Handpieces • Flexible Shaft Machines • Handpieces • Di-Profilers • Hangers • Mandrels • Hand Grinders

## **Air Tools**

Air Grinders • Filters, Regulators, Lubricators • Air Hose and Fittings

## **Polishing Supplies**

Brushes • Buffs • Felt Bobs and Laps • Synflex Bobs and Wheels • Selvyt • Diamond Compounds • Sticks • Buffing, Lapping and Polishing Compounds • Motors • Dust Collectors • Air Cleaning Systems • Goggles and Masks • Finger Tape, Guards, Cots

## **Diamond & CBN**

Files and Riffles • Grinding Wheels • Pins • Points and Wheels • Cutters • Points • Dressing Tools • Lappers • Scriber • Compound • Sheet • Cloth • Foil

## **Cutting Tools**

Carbide Burs • HS Burs • Busch Burs • Bur Boxes and Holders • Blanks and Cutters • Drills • Center Punch • Drill and Countersinks • Hand Reamers • End Mills • Accu-Finish Machine

## **Files & Riffles**

Swiss Pattern • American Pattern • Needle • Escapement • Diamond • Flexi • Poli • Handles • Riffles

## **Hand Tools**

Sandblasters, Blasting Media • Hammers • Mallets • Sawblades • Saw Frames • Snips • Tweezers • Pliers and Nippers • Screwdrivers • Hemostats • Pin Vises • Bench Vises • Pin Grinding Fixtures • Gravers • Scribes • Chisels • Deburring Tool • Scrapers • Knives

## **Measuring, Magnifying, Lighting**

Calipers • Micrometers • Dividers • Gage Sets • Telesights • Optivisor • Magni-Focusers • Loupes • Lamps

## **Welding Machines**

Weldmax • Weldmax Accessories • Welders

## **Torches**

Little Torch, The Small Torch, Regulators, Hose, Tips • Torch Lighters

## **Cleaning**

Ultrasonics • Ultrasonic Cleaning Solution • Cleaners/Degreasers • Steamers

## **Shop & Safety Supplies**

Lubricants • Cleaners • Mold Releases • Adhesives • Glasses

## **Books**

## **Ordering Information, Conversion Chart**

## **Index**

## **Safety Recommendations**

Phone Toll Free: (877)438-7657      Fax: (814)438-8146

www.toolingcomponentsinc.com    email: sales@toolcompinc.com



**Tooling Components, Inc.**





# MOLD SOLUTION PRODUCTS™

## Lecithin Mold Release #1504

Highly versatile release agent. Perfect for molded parts that need painting or any post decoration. Recommended for all injection and compression plastics. No build up on molds and minimal migration. Neutral in color, odorless, non-staining, FDA approved. Ideal ultra sonic anti-splatter.

16 fl. oz. I No CFC



## Mold Saver #1706

Our mold saver is an excellent corrosion inhibitor. Its light film not only eliminates moisture penetration, but displaces any preexisting moisture. Great for both long and short term storage, shut-downs and even shift changes. No silicones, odorless, colorless, minimal bleeding and nonstaining. Perfect for protecting newly built molds during transportation. Burns off quickly, eliminating the need for cleaning before production. Used by both molders and mold builders.

16 fl. oz. I No CFC

## Tool Towels #7001

Specifically designed and engineered for the plastic molding and mold building environments. TOOL TOWELS wipe away all particles found in normal molding applications. No need to potentially contaminate your mold with a dirty shop rag while cleaning a vent, runner, parting line or the mold while the tool is in production. TOOL TOWELS are designed to clean this grim and more. The best part is you throw them away! Perfect for all non porous tool steels, aluminum and most surfaces found in manufacturing environments. Non-abrasive, cloth free and disposable. Works even more effectively when used in conjunction with mold cleaner-degreaser #1605.



## Mold Cleaner- Degreaser #1605

Heavy duty cleaner formulated as a strong, effective remover of plastic resins, greases, paints, oils, release agents, and all unwanted substrates found on mold tooling. Safe on all metals and most plastics. Controlled evaporation leaving no residues. Non abrasive, colorless cleaner saves you time and aggravation while cleaning your molds and tooling.

16 fl. oz. I NO CFC

## Silicone Mold Release #1302

Superior mold release for high temperature, pressures and hard to work resins. Recommended for all common resins used in injection, compression, rim, extruders and vacuum formers. Colorless, odorless, FDA approved. Prevents build-ups and is non staining. Fast drying on both hot and cold molds.

16 fl. oz. I No CFC

Phone Toll Free: (877)438-7657

Fax: (814)438-8146

www.toolingcomponentsinc.com email: sales@toolcompinc.com



**Tooling Components, Inc.**