

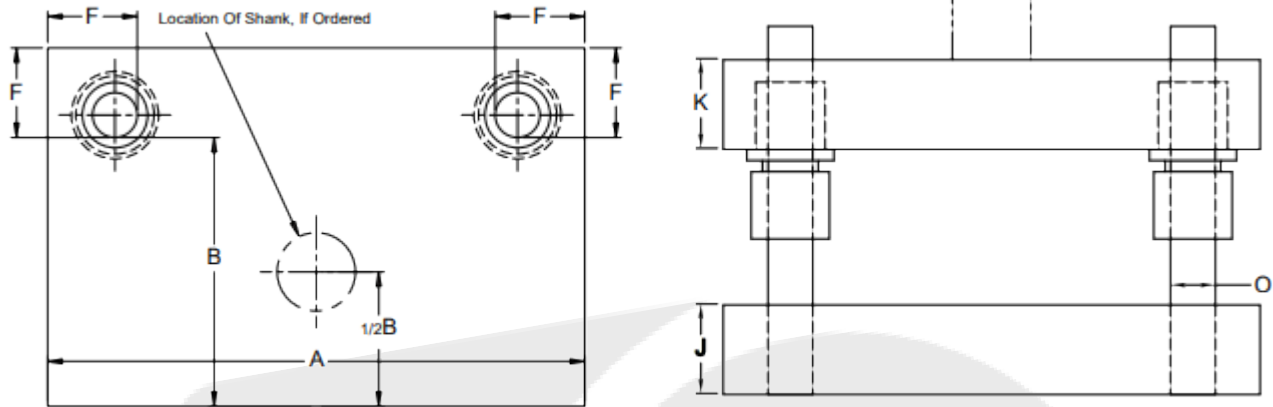


8349 West High Street
Union City PA 16438

EST. **TC** 1987
TOOLING COMPONENTS LLC

@ sales@toolingcomponent.com
(814) 438-7657

Die Set Back Post Plain Bearing AS-33



Notes: "O" and "F" dimensions per catalog unless otherwise specified Plain Bearing Sets "F" from guide post.

A		When: O	1	1-1/4	1-1/2	1-3/4	2	2-1/2	3
B		F Is:	2	2-1/4	2-1/2	2-3/4	3	3-3/4	4-1/4
J		If shank is desired, indicate size: _____ Size of shank, if ordered Shank will be located at 1/2B dimension unless otherwise specified. *1-1/2" diameter x 2-1/8" Long *1-9/16" diameter x 2-1/8" long *2" diameter x 2-7/8" long *2-1/2" diameter x 2-7/8" long *3" diameter x 2-7/8" long							
K									
O									
L									

Bushing Style: _____

Demountable Steel Shoulder Bushings will be furnished unless otherwise specified.

Lift Holes: _____

Lift Hole Quantity: _____

Special Request: _____

** Parts will require a STP / CAD file if form work is needed
 ** Please carefully confirm all dimensions & tolerances before order is placed.
 ** Specials are Non-Returnable / Non-Cancelable.

Company: _____

Contact: _____

Phone: _____

Email: _____